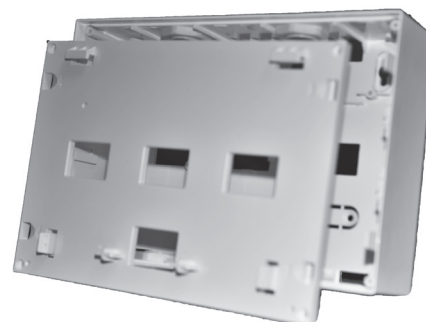


KM-BBOX-01

Backbox for K-Mesh Translator, Expander and Output Modules

Features

- ▶ Wall mountable
- ▶ 4 x 20mm cable gland holes
- ▶ 2 x cable glands included
- ▶ Easy clip mount of wireless module



Description

KM-BBOX-01 is an installation accessory for use with the K-Mesh Wireless Translator, K-Mesh Wireless Expander and K-Mesh Wireless Output Module. Constructed from white ABS the backbox allows extra space for cabling especially where surface mounting of cable is required.

The surface mount backbox is supplied in two parts, the back box itself and a mounting plate for the module. The mounting plate is clipped to the backbox with the relevant module then clipped onto the mounting plate.

4 x 20mm pre-drilled cable entries are provided on the back box, these are fitted with blanking glands with 2 x M20 x 1.5 cable glands provided with the box.

Ordering codes

Part no.	Description
KM-BBOX-01	Backbox for K-Mesh Translator, Expander and Output Modules
Compatible K-Mesh modules	
KM-WL8-TRH	K-Mesh Wireless Translator Module
KM-WL8-EXP	K-Mesh Wireless Expander Module
KM-WL8-OUT	K-Mesh Wireless Output Module

Specifications

Colour	White
Material	ABS
Cable entries	4 x 20mm
Dimensions (mm)	H 141 x W 208 x D 50
Weight (g)	307

Datasheet DS178 11/21 Rev.01