

Product launch bulletin

Syncro/Taktis bridge

Kentec would like to announce with the release of the Syncro/Taktis bridge.

Product Info

Syncro/Taktis bridge is a firmware feature within the Taktis control panel which enables it to communicate with Syncro and Syncro AS control panels. This provides an upgrade path for customers who have existing Syncro and Syncro AS systems, upgrades can be completed gradually i.e. one panel at a time reducing the financial burden and downtime for the end user.

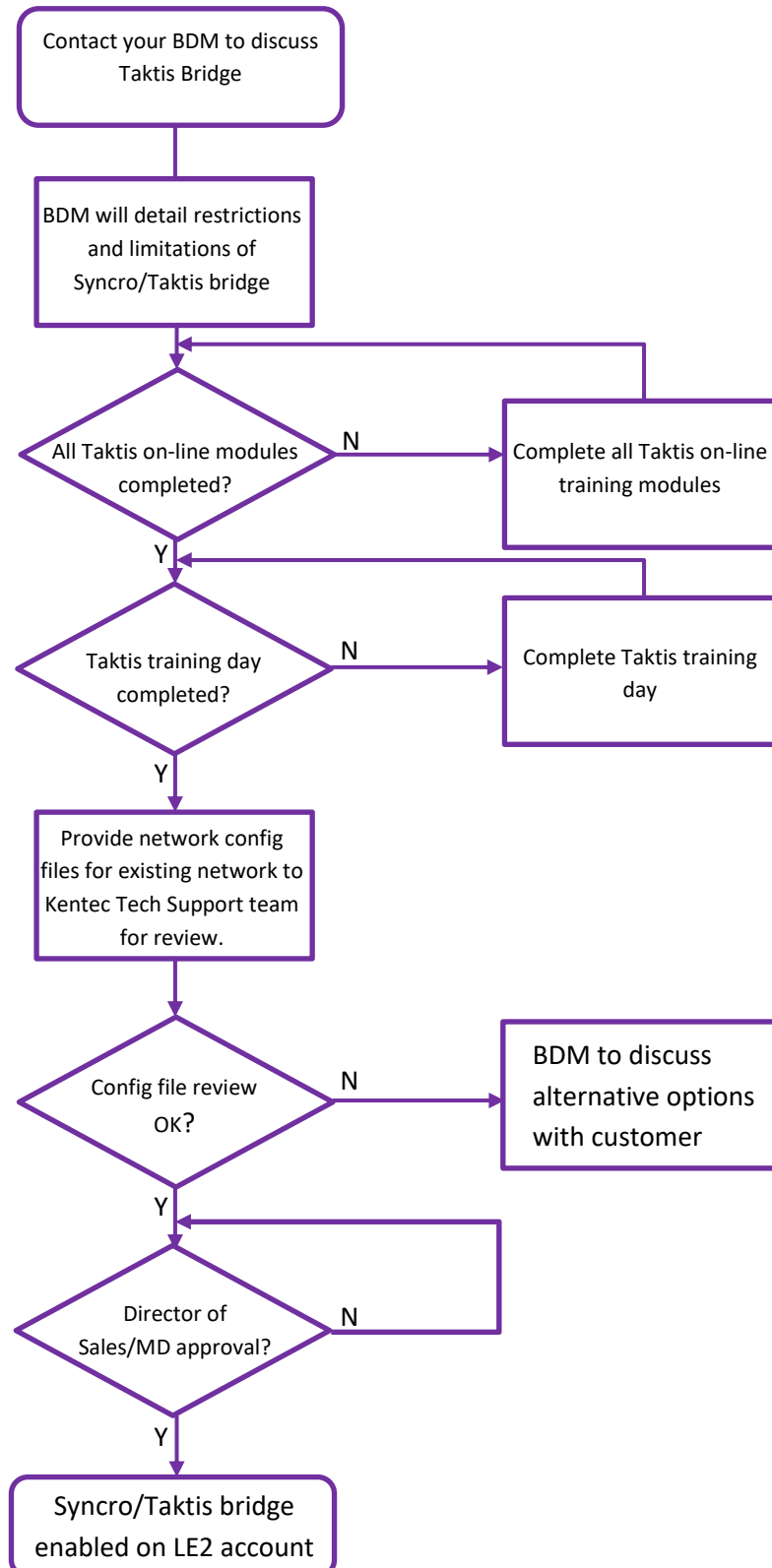
Syncro/Taktis bridge also enables expansion of existing Syncro networks using the Taktis control panel.

Syncro/Taktis Bridge		
Brief Description	USP's	Release Criteria
<ul style="list-style-type: none"> Firmware feature enabling integration of Syncro and Taktis panels on the same network 	<ul style="list-style-type: none"> Simple upgrade path for existing systems Expansion of existing Syncro networks with latest Taktis technology Cross panel programming between Syncro & Taktis panels 	<ul style="list-style-type: none"> Taktis feature restricted in LE2 to customers who have fulfilled the necessary criteria Firmware compatibility: Taktis EN-00.11.R0083 Syncro (Apollo) rev 6.50 Syncro (Hochiki) rev 6.51 Syncro AS rev 6.52 Software compatibility: LE2 rev 3.290.03 Does not support use of AUX LEDs provided on Syncro panels Does not support cross panel programming of programmable panel inputs on Syncro or Taktis Does not support Focus network repeaters Network limited to Taktis panels of 1-4 loops Access to bridge feature is enabled by customer not individual engineer

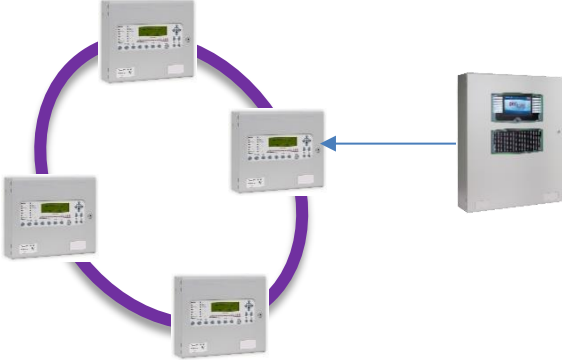
Syncro/Taktis availability

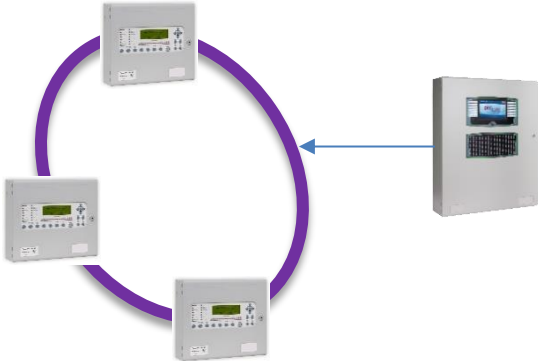
Access to the Syncro/Taktis bridge feature is restricted, to those who are competent in both the Syncro and Taktis products with the feature being turned off as default in the LE2 config software. Customers must meet the following criteria to be eligible for access to the bridge functionality.

Activation process for Syncro/Taktis bridge



Syncro/Taktis bridge

Brief Description	Release Information
<p data-bbox="204 409 783 439">Replacement of Syncro/Syncro AS panel with Taktis</p> 	<ul data-bbox="890 392 1374 880" style="list-style-type: none"> • Requires Taktis panel and network card (K2008) • Allows gradual upgrade of network one panel at a time • Network connections remain the same NET in to NET out • Create LE2 network config file • Convert relevant panel in config from Syncro to Taktis • Instruction manual Man-1160

Brief Description	Release Information
<p data-bbox="204 1111 807 1171">Expanding an existing Syncro/Syncro AS network with Taktis</p> 	<ul data-bbox="890 1144 1374 1570" style="list-style-type: none"> • Requires Taktis panel and network card (K2008) • Allows easy expansion of existing networks • Network connections remain the same NET in to NET out • Create LE2 network config file and add new Taktis to config • Instruction manual Man-1160

Syncro/Taktis bridge limitations

Creation of a Syncro/Taktis bridge requires modification of the configuration file for the existing Syncro network. As the Syncro and Taktis are different panel technologies the following design limitations exist and must be taken into consideration:

Design limitation	Options
<p>Auxiliary Indicators Syncro panels feature auxiliary LEDs which are not supported on the Taktis panel. If the Syncro panel config utilises these LED indicators in the cause and effect they must be removed from said cause and effect before converting to a Taktis config file.</p>	<p>If Aux LEDs are required a 16 channel I/O card added to the Taktis panel can be configured to drive remote LEDs.</p>
<p>Programmable Inputs Syncro/Taktis Bridge networks do not support cross panel programming of the panel programmable inputs, both Syncro and Taktis provide 3 programmable inputs on the main board (Syncro PR1, PR2 and PR3, Taktis Prog IP 1, 2 & 3). If Syncro panels on the network contain cross panel programming for these programmable inputs this will need to be amended.</p>	<p>Cross panel programming of inputs can be done using I/O card inputs or loop input modules in place of the panels programmable inputs.</p>
<p>Max 4 Detection Loops To align with Syncro configurations and functionality, Syncro/Taktis Bridge networks will only support Taktis panels with up to 4 detection loops.</p>	<p>Syncro 8 loop panels exist where 2 x 4 loops have been built into one enclosure, these panels would require two 4 loop Taktis panels as the replacement solution.</p>
<p>Focus Network Repeaters Syncro/Taktis Bridge does not support the older Focus network repeaters.</p>	<p>If upgrading or expanding a Syncro network which contains focus repeaters the repeaters would need to be upgraded to the latest Vision repeaters.</p>
<p>Network size Networks containing Syncro panels are limited to 64 nodes this does not increase with the addition of Taktis.</p>	<p>Converting all Syncro panels to Taktis panels will allow the network to be expanded beyond 64 panels.</p>

Documentation

Is available on the [Kentec website](#)

Man-1160 Taktis/Syncro Bridge Network Instructions

Contact information

General sales enquiries

sales@kentec.co.uk

Tel: +44 [0]1322 222121

UK Sales

UK West & South West, Ireland & Channel Isles

Kevin McCarthy

E-mail: KMCarthy@kentec.co.uk

Tel: +44 [0]7825 344133

UK South

Jason Pye

E-mail: jasonp@kentec.co.uk

Tel: +44 [0]7554 400803

UK North

Richard Day

E-mail: RichardTDay@kentec.co.uk

Tel: +44 [0]7763 989464

Head of UK sales

Wayne Marston

E-mail: wayne.marston@kentec.co.uk

Tel: +44 [0]7738 928373

International sales

Central & Southern Europe & Asia

Leonie Walker

E-mail: leoniew@kentec.co.uk

Tel: +44 [0]7706 291287

Scandinavia & Eastern Europe

Marcel Zwarthoed

E-mail: marcelz@kentec.co.uk

Tel: +31 [0] 6 2331 6829

Africa

Chris Matthews

E-mail: Chris.matthews@kentec.co.uk

Tel: +44 (0)7469 140214

Middle East

Costas N Constantinides

E-mail: costas@kentec.co.uk

Tel: +357 99 981 401

Technical Support

Tel: +44 [0]1322 222121

E-mail: techsupport@kentec.co.uk