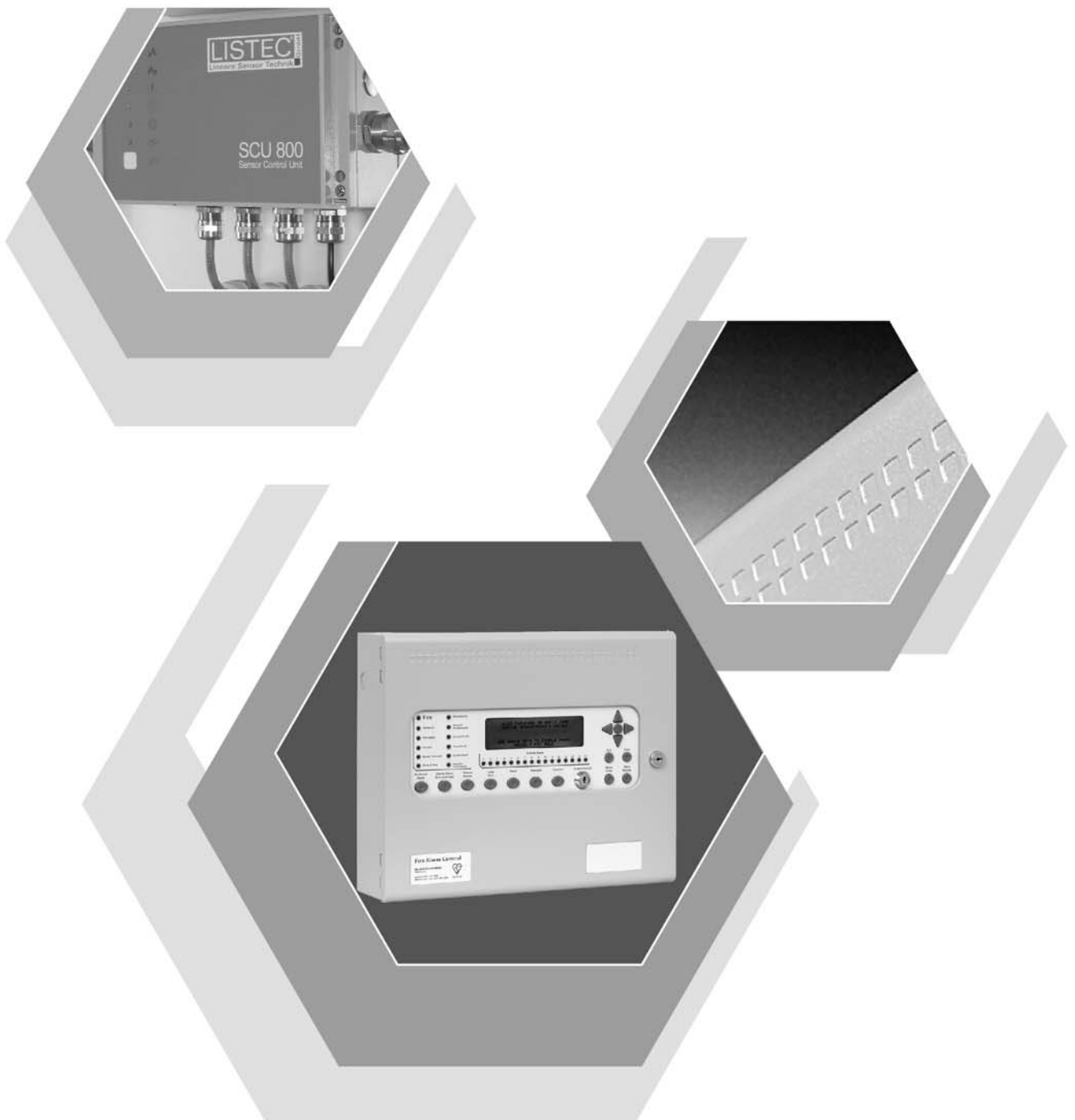


# Syncro AS Listec

## Fire Alarm Control Panel With Listec Interface

### Operation and Maintenance Manual

Man-1120 Issue 03 June 2013



**This manual should be read in conjunction with the following:**

**Kentec MAN-1096 Syncro AS Listec Analogue Addressable Fire Control Panel Product Manual.**

**Listec Fire detection system installation guidelines.**

**Listec Linear heat detection manual**

# INDEX

<b>Section</b>	<b>Page</b>
1. Description .....	4
2. Connecting the Syncro AS Listec panel to the SCU800 linear heat detection controller .....	4
3. Configuring the Listec SCU800 unit.....	7
4. Configuring the Syncro AS Listec addressable control panel .....	8
5. Testing .....	13
6. Power supply .....	13

# 1. Description

Syncro AS Listec "LT" models are compatible with Listec SCU800 linear heat detection controllers. Standard Syncro AS control panels without the "LT" prefix in their part numbers **are not** compatible with Listec SCU800 linear heat detection controllers.

The SCU800 linear heat detection controller, connects to the Syncro AS Listec analogue addressable fire alarm control panel via a three wire RS232 interface and allows all points in linear heat detection cables connected to the Listec SCU800 controller, to be represented on the Syncro AS Listec control panel in the same way as all other inputs to the Syncro AS Listec control panel.

This means that inputs from all points on the Listec linear heat detection cable can be configured to have an event type, address, zone, 40 character location text message and participate in cause and effects with all other elements of the fire detection system.

## 2. Connecting the Syncro AS Listec panel to the SCU800 linear heat detection controller

Due to the distance limitations of the RS232 interface, the Listec SCU800 linear heat detection controller must be mounted within 15 metres of the Syncro AS Listec control panel and preferably within 3 metres.

Syncro AS Listec, LT panels are supplied with a 4 metre ready made lead which connects between the 10 way PC socket on the Syncro AS Listec control panel and the 9 pin "D" connector labelled ST4 on the SCU800.

The ready made lead can be used with the supplied cord grip bushes as shown in figures 1 and 2.

If the SCU800 unit must be mounted more than 3 metres from the Syncro AS Listec control panel then the lead can be carefully cut and extended but it must not be extended such that the total length is greater than 15 metres.

All connections to the SCU800 and the Syncro AS Listec control units should be made with the power off.

Figure 1.

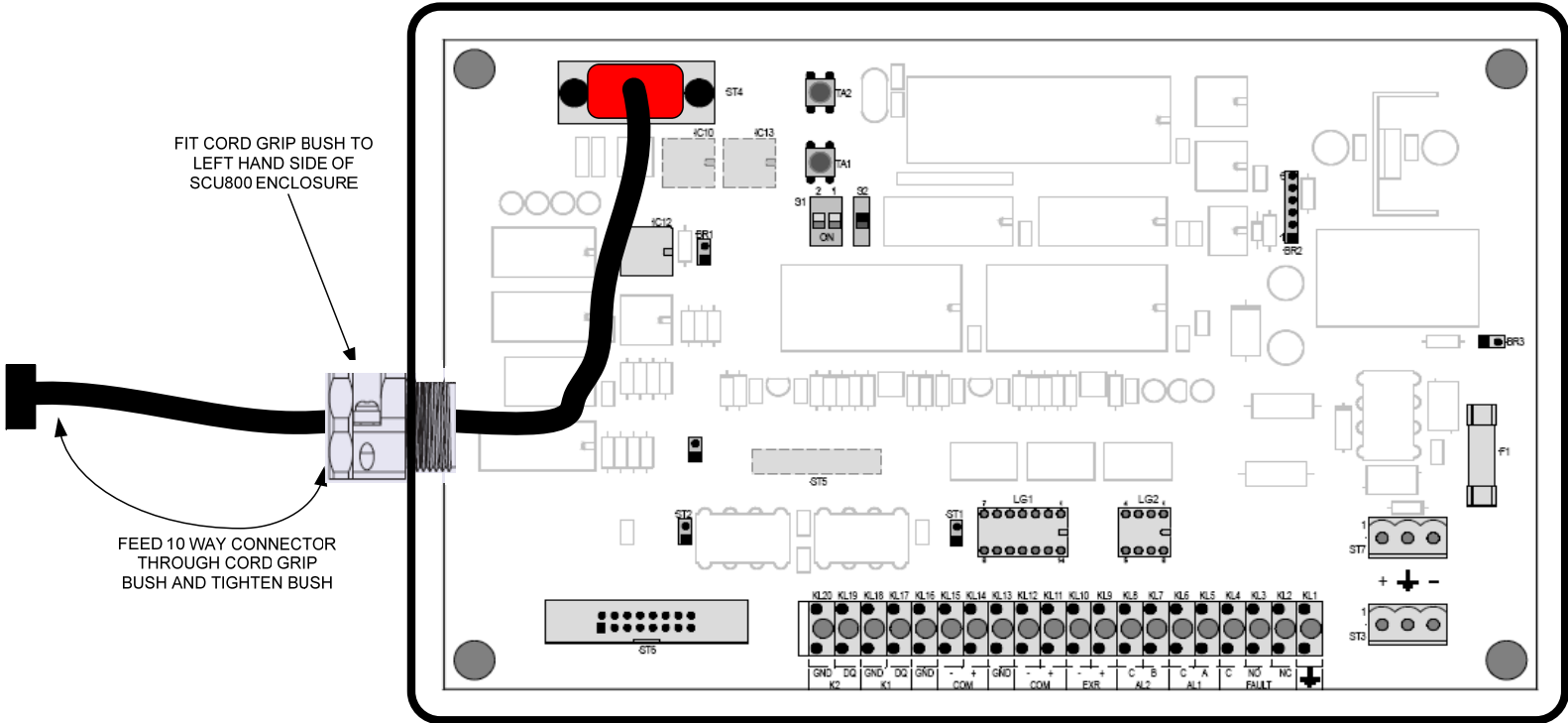
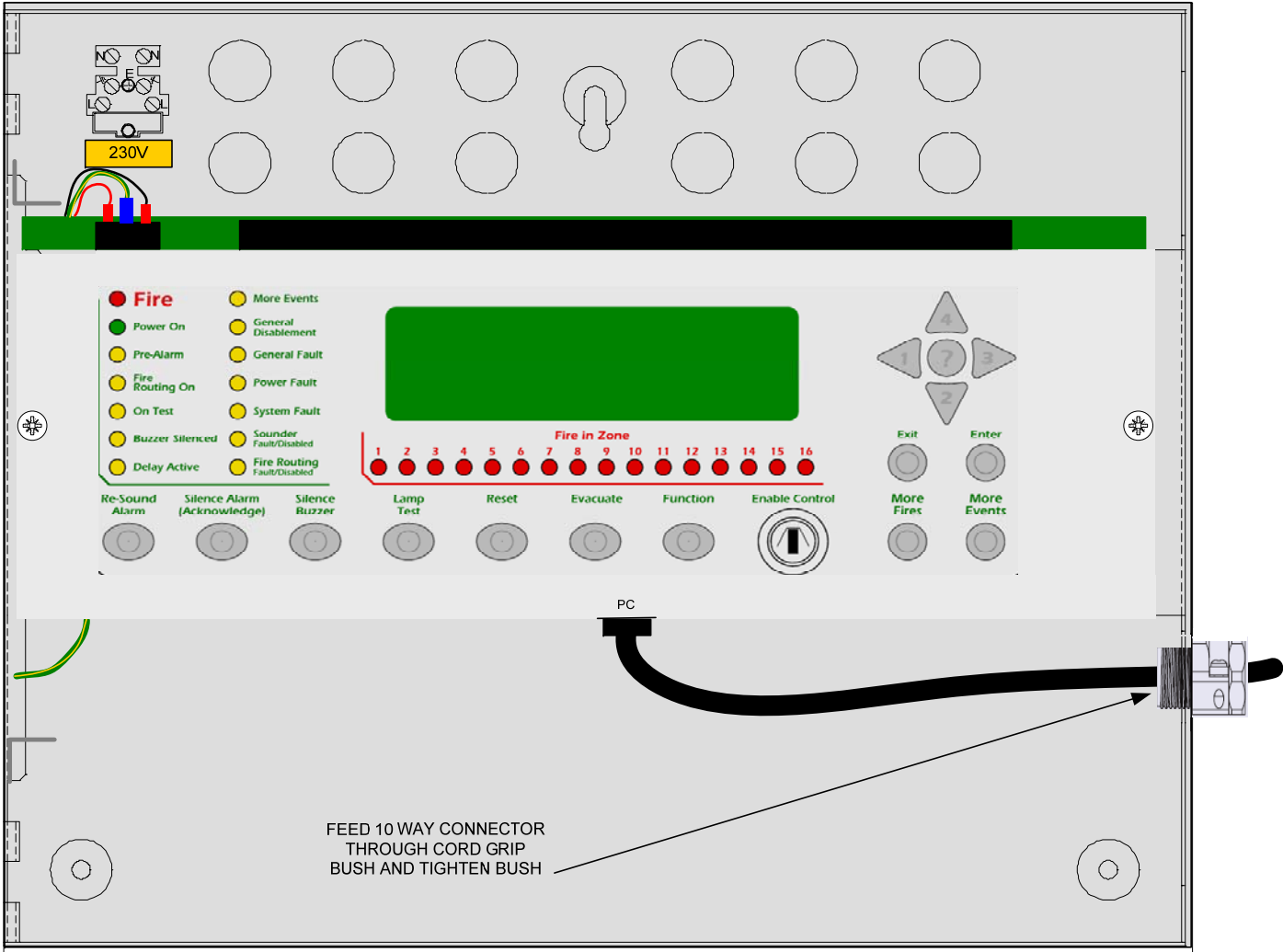


Figure 2.



### 3. Configuring the Listec SCU800 unit

The Listed SEC15 cable and SCU800 unit should only be configured in accordance with **Listec document V6096**.

To enable the Syncro AS Listec control panel to allocate zones for the addressable modules of the linear heat detection cable, the modules in the cables must be re-numbered using the Listec cable file and the Listerm configuration utility.

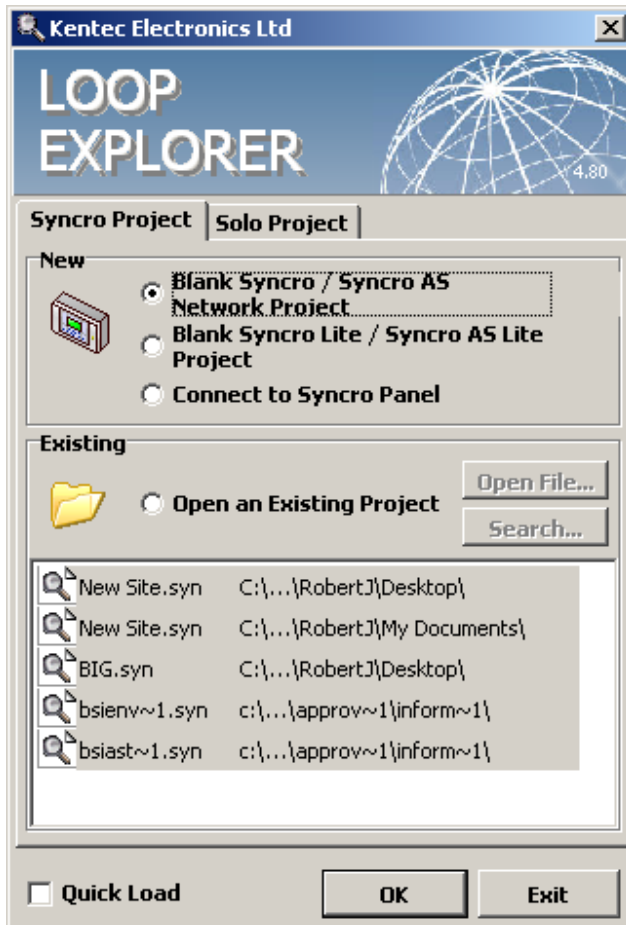
**The internal TA1 and TA2 buttons inside the SCU800 unit are not used in this application and should not be pressed under any circumstances. A configuration fault will be shown on the display of the Syncro AS Listec control panel if these buttons are pressed. However, removing power from the SCU800 for 30 seconds and then re-applying power, will automatically re-load the Listec SCU800 configuration data from memory and correct the configuration fault.**

NOTE: Listec SCU800 units must be fitted with software version V1.16 or higher for correct operation.

## 4. Configuring the Syncro AS Listec addressable control panel

The Syncro AS Listec control panel is configured using the Listec version of the Loop Explorer configuration utility. Each length of Listec cable can have up to 99 modules configured.

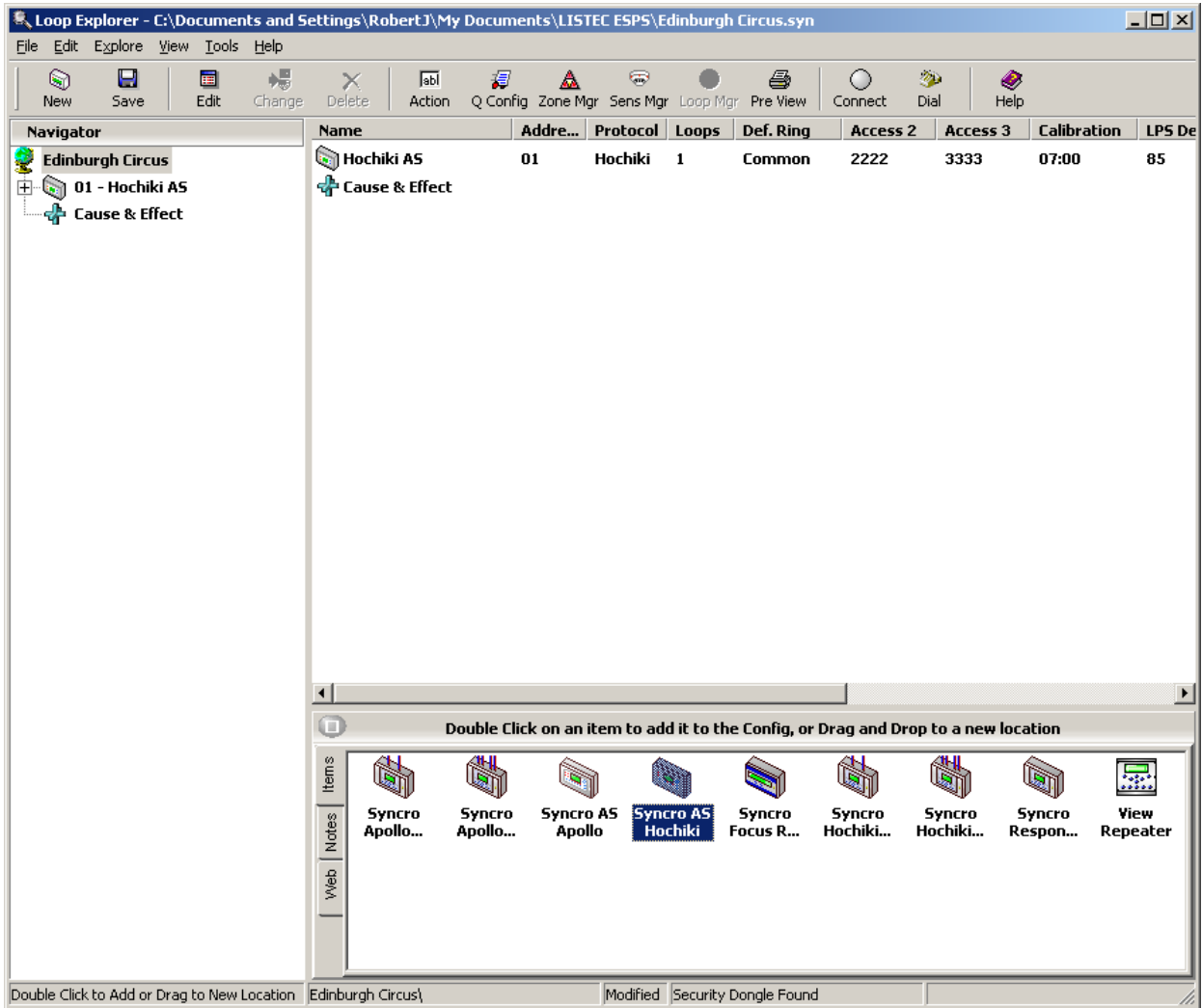
Upon opening Loop Explorer select "Blank Syncro/Syncro AS Listec Network Project" as shown below.



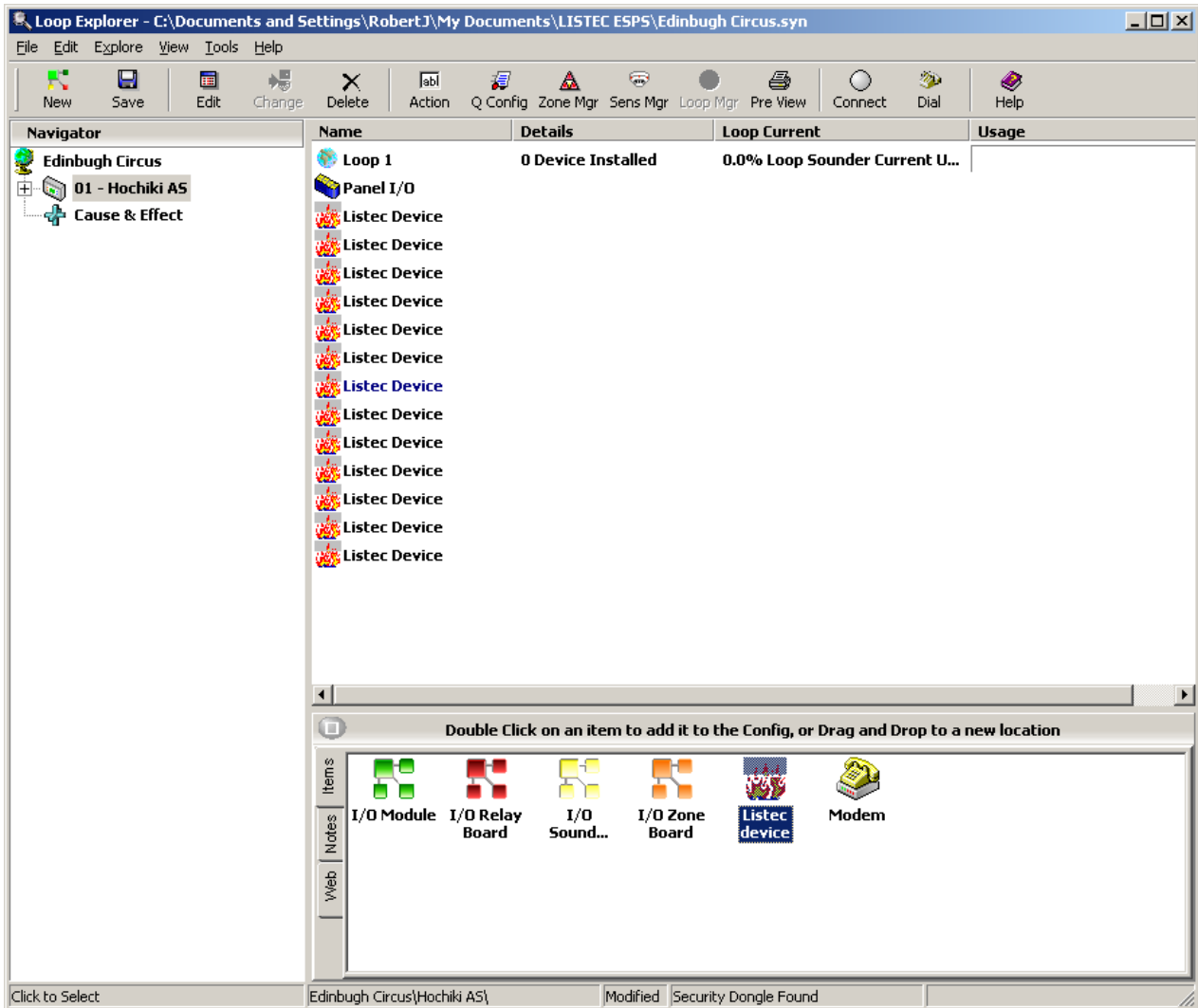
Then save the file using a suitable name which is descriptive of the project.



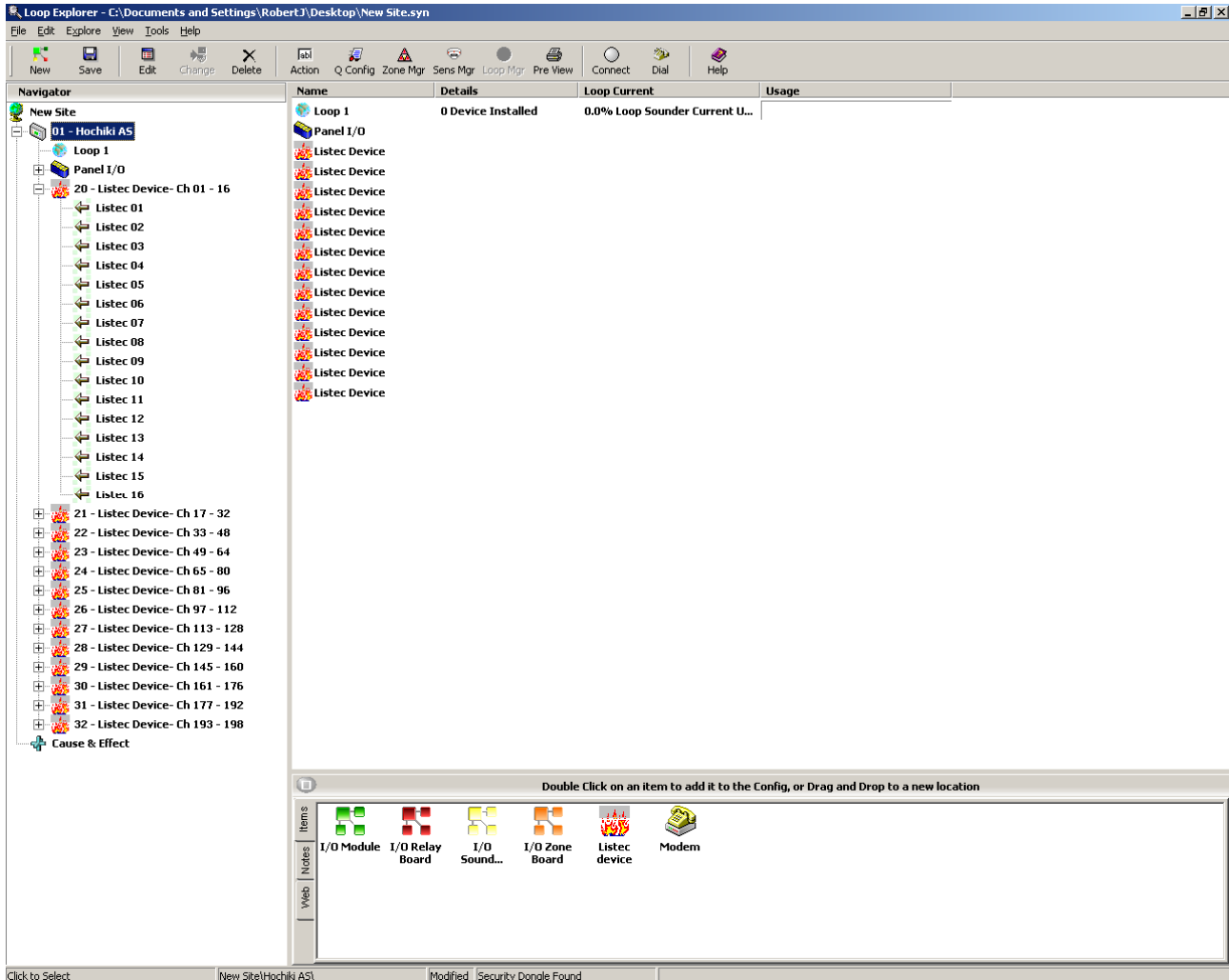
Next select a Syncro AS panel of the required protocol from the panel list along the bottom of the window.



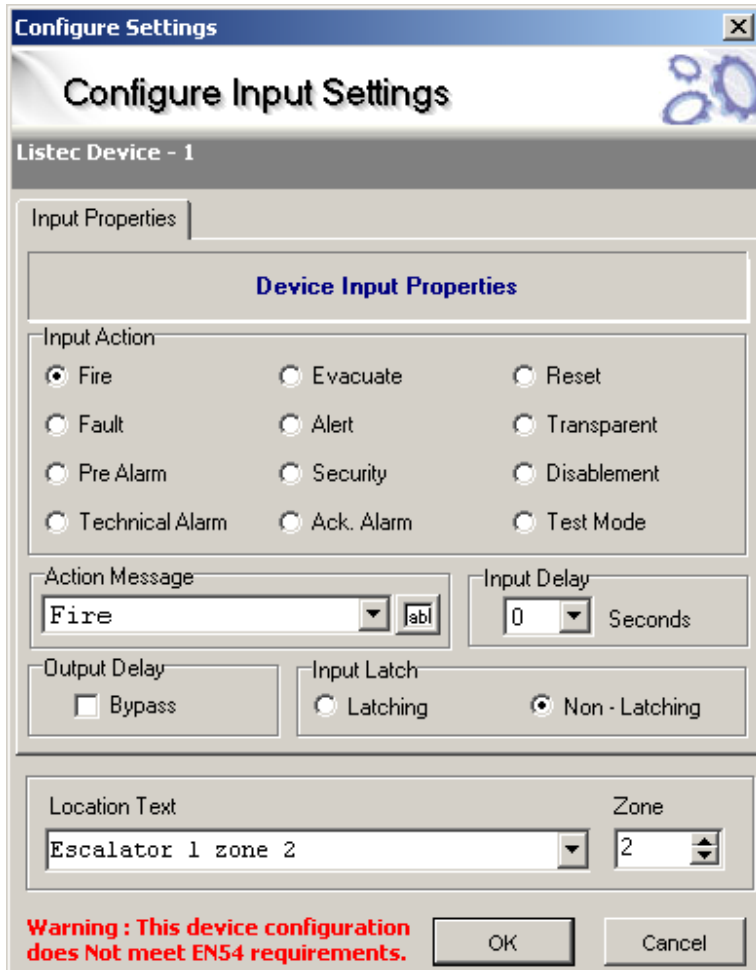
Select the panel and double click the Listec Device icon shown at the bottom of the window.



Click the + sign next to the panel in the left window and then click the + sign next to 20 – Listec Device – Ch 01-16.



Double click ← Listec 01 and in the “Configure Input Settings” screen that is displayed allocate a zone number and text message for this detection element of the Listec cable.



Repeat this process until all detection elements in the Listec cables have been configured.

For details on configuring the devices connected to the detection loops of the Syncro AS Listec control panel refer to the Syncro AS operation and maintenance manual.

## 5. Testing

The Listec linear heat detection cable can easily be triggered by applying a small amount of heat at the points on the cable which are marked with a number followed by an asterisk e.g. 0734\*.

The heat from a hand grabbing the cable firmly is normally enough to trigger the system but the increase in temperature must be sustained for at least 20 seconds.

Trigger a section of cable in the zone to be tested as described above or using another, mild heat source.

When the cable is in alarm, a pulsing buzzer will be heard at the control panel, the common red fire LED and zonal fire LED will illuminate and a text message will be displayed indicating the location of the alarm.

## 6. Power supply

The Listec SCU800 control unit and associated linear heat detection control panels require a nominal 24V supply 310 milliamps in quiescent mode, 390 milliamps in alarm mode.

This power can not be derived from the Syncro AS Listec control panel and should be provided by a separate power supply and battery charger capable of charging batteries of a suitable size to maintain the SCU800 for the required standby period.